

GP1400 & GP1600 Operator's Safety & Service **Manual**



**It is the OWNER'S RESPONSIBILITY to communicate information
on the SAFE USE and OPERATION of this machine to the
operators.**

MBW (UK) Ltd.
Units 2 & 3 Cochrane Street,
Bolton BL3 6BN
United Kingdom
Tel 01204 387784
Fax 01204 387797
e-mail mbwuk@btinternet.com
web-site www.mbw.com

Providing Solutions That Last.

Table Of Contents.

2. Safety Precautions.
3. Warranty.
4. Specifications.
5. Operating Instructions.
6. Operating Instructions.
7. Maintenance Schedule.
8. Declaration Of Conformity.
9. Vibration Assessment.
10. GP1400 & GP1600 Assemblies.
11. Parts List.

Safety Precautions.

Read and study the following safety information prior to attempting to operate this equipment. In addition, ensure that every individual who operates, or is likely to operate, this equipment is familiar with these safety precautions.

Warning – Lethal GAS!

An internal combustion engine discharges carbon monoxide, a poisonous, invisible, odourless gas. Death or serious injury may result if inhaled. Operate only in an area with good ventilation. **Never use in a confined area.**

Warning - Dangerous Fuels!

Use extreme caution when storing, handling and using fuels. The fuel is highly volatile and explosive in a vapour state. The engine must be stopped and left to cool before refuelling. Do not smoke, or have open flames around when refuelling.

Safety Guards.

It is the users responsibility to ensure that All Guards & Shields are in place and in working order.

Ignition Systems.

Breaker-less, Magneto and battery ignition systems **CAN CAUSE SEVERE ELECTRICAL SHOCKS.** Avoid contacting these units or the wiring assemblies.

Safe Dress.

Do not wear loose clothing, rings, watches, etc near machinery. Appropriate PPE (Personal Protection Equipment) must be worn at all times. Items such as overalls, high visibility jacket, ear-defenders, gloves, visor, hard-hat and approved protective footwear must be worn in accordance with good working practices as advised by the UK Health & Safety Executive.

Operator.

Keep children and bystanders off and away from the equipment.

References.

For full details of safety rules and legislation in the UK, contact your local office of The Health & Safety Executive. Equipment operated in other countries must be operated and serviced in compliance with any/all safety requirements of that particular country. This publication is issued for your information only. MBW (UK) Ltd does not, by the publication of these safety precautions, imply or represent that these are the sum of all dangers present near MBW equipment. If you are operating MBW equipment, it is your responsibility to ensure that such operation is in accordance with all applicable safety requirements, legislation and codes of practice.

Warranty.

This is your warranty document Please read and keep this document safe.

1. MBW (UK) Ltd warrants each new machine against defects in material and workmanship under normal use and service for a period of six (6) months. This warranty commences on the first day that the machine is sold, assigned to a hire fleet or otherwise put to first use.
2. The obligation under this warranty is limited to the replacement or repair of parts and/or machine at MBW (UK) Ltd facility or at authorised MBW Distributors.
3. Machines altered or modified without our written consent voids this warranty. Abuse, negligence, accidents, lack of maintenance or the operation of machines in any other way than we recommend will void this warranty. This warranty shall not apply to machines repaired by other than MBW (UK) facility or our appointed Distributors.
4. This warranty includes labour on all MBW products. Labour must be performed by, and at, MBW (UK) facility.
5. The cost of transportation and any/all expenses connected therewith, are not covered by this warranty.
6. MBW (UK) reserves the right to inspect and render final decision on each and every warranty claim.
7. MBW (UK) reserves the right to improve or make product changes without incurring any obligation to update, refit, or install the same on previously sold machines.
8. MBW (UK) is not responsible for any liability or damage or injury directly or indirectly from design, material or operation of its products.
9. The foregoing warranty is expressly in lieu of all other warranties, expressed or implied, including the warranties of merchantability and fitness for use, and of all other obligation or liabilities on our part. We neither assume, nor authorise any other person to assume for us any other liability or warranty in connection with the sale or service of any of our products. This warranty shall not apply in respect to engines, air-motors and other third party components.

Specifications.

Model	Weight (kg)	Plate W x L (mm)	Force (Kgf)	Speed (mtr/min)	Engine Make (hp)	Engine Speed (rpm)
GP1400H	60	360 x 510	1,030	20-25	Honda GX120QX 4hp	3,600
GP1400HW	64	360 x 510	1,030	20-25	Honda GX120QX 4hp	3,600
GP1600H	64	410 x 510	1,030	20-25	Honda GX120QX 4hp	3,600
GP1600HW	68	410 x 510	1,030	20-25	Honda GX120QX 4hp	3,600

As we employ a policy of continual improvement these specifications are subject to change without prior notice.

Options available –

1. Neoprene Kit for the compaction of interlocking blocks.
2. Water kit for asphalt applications.
3. Wheels for easy transportation.

Operating Instructions.

MBW Compaction equipment is intended for use in very severe applications. They are powered by reliable four-stroke petrol engines and are available in different sizes and with a selection of engines.

The MBW GP1400 & GP1600 plate compactors are intended to compact granular materials, sand/gravel mixes and asphalt. The MBW GP1400 & GP1600 plate compactors are not recommended for use on cohesive soils (clay) nor for an extended period of time on very hard surfaces such as concrete.

This manual contains only standard or standard option parts. Variations of these parts as well as other special parts are not included. Contact your local MBW Distributor for assistance in identifying parts/options not included in this manual.

Before Operating this machine.

After receiving your new MBW Plate Compactor, inspect it for any visible damage caused during transit. Make sure that engine throttle works properly (see engine owners manual). Contact your local MBW Distributor should you have any problem.

Remember that it is the owner's responsibility for communication information on the safe and correct use of this unit to the operators.

1. Before operating, review related **SAFETY PRECAUTIONS** listed on page 2 of this manual.
2. Familiarise yourself with the operation of the equipment **before** starting the engine.
3. Know how to stop the equipment.
4. Make sure that all guards and shields are in place and functioning.
5. Ensure that Personal Protection Equipment is worn at all times.
6. Oil-Level – Check the oil level in the engine. For detailed information please refer to the engine owner's manual.
7. Air-Cleaner – Check to ensure that the element is in good condition and properly installed.
8. Fuel Supply – Use only clean, fresh Four-Stroke petrol in all petrol engines.
9. Fuel Filter – If clogged or damaged, replace.

Engine.

Refer to engine owner's manual for location of all controls and fixtures.

Starting the Engine.

For detailed information refer to the engine owner's manual.

1. When starting the engine ensure that the throttle is in the idle position. Open fuel valve. Use choke if necessary remembering that a warm engine is unlikely to need choking.
2. Pull recoil starter cord. Once the engine starts return the choke (if used) to the off position. Let the engine warm in the idle position for one or two minutes.

Running the engine.

1. After the engine is warm fully open the throttle. Compactor will begin vibrating and moving in a forward direction. The number of passes needed to reach the desired compaction level will depend on soil type, moisture and lift thickness.
2. When using the compactor on asphalt it is strongly advised that the unit is fitted with a water sprinkling system, which will ensure that the bottom of the plate compactor remains free of hot asphalt.

Stopping the engine.

To stop the compactor from moving forward, return the engine throttle to idle.

1. Wherever possible it is advisable to allow the engine to idle for a short period of time prior to stopping.
2. Turn switch on engine to the "STOP" position (for detailed information please refer to the engine owner's manual).
3. Turn off the fuel valve.

Remember to stop the engine before:

1. **Adding fuel.**
2. **Leaving the machine unattended.**
3. **Making any repairs or adjustments to the machine.**

Maintenance Schedule.

System.	Maintenance.	Each use.	Every 50 hours	Every 200 hours	Annually.	
Engine	Refer to Engine Owner's manual.	X				
Exciter	Check for Oil leaks	X				
	Change Oil			X	X	
	Tighten Bolts		X			
Hardware	Check for any bolts that need to be retightened.		X			
Shock-Mounts	Check for cracks or damage.		X			
Base Plate	Clean and ensure that it is free of any build up of asphalt		X			
Safety Decals	Check that all decals are clearly visible	X				
Safety Guards and Shields	Check that all Guards and Shields are in place and working.	X				

Remember – You own the best. If repairs are needed use only MBW parts purchased from an Authorised Distributor.

EC Declaration Of Conformity.

We:
M-B-W (UK) Limited
Units 2 & 3 Cochrane Street,
Bolton,
BL3 6BN
United Kingdom

Declare under sole responsibility that the
Product:- MBW Plate compactors
Model:- GP1400 & GP1600
Serial numbers:- 140646 – 140999 & 160531 - 160999

To which this declaration relates, with a net power of 2.9Kw and having been tested in accordance with the Conformity Assessment Procedure detailed in Annex VI of Directive 2000/14/EC and verified by the following Notified Body:-

AV Technology Limited
AVTECH House,
Birdhall Lane,
Cheadle Heath,
Stockport Cheshire
SK3 0XU

Is in conformity with the provisions of the Noise Emission in the Environment by Equipment for use Outdoors Directive 2000/14/EC. A representative sample of this equipment was tested and Sound Power Levels (Lwa) recorded of:-

102dB

We guarantee under the provisions of the above Directive (2000/14/EC) that the Sound Power Levels for this equipment will not exceed:-

105dB

We also declare that the above equipment is also in accordance with the following EC Directives:-

98/37EC

89/336/EC

Reference to harmonized standards EN50082-1, EN474-6

97/37/EC was formerly known as 89/392/EC as amended by 91/368/EC and 93/68/EC

M-B-W (UK)Ltd

(address as above)

Greig Sandiford
Managing Director
Name and signature of the
Authorized person



Vibration Assessment.

When comparing our figures with those available from other manufacturers, it should be noted that as there is no formal guideline from any legislative body regarding the testing protocol, all data is to be viewed as advisory at best.

Our testing protocol was developed to ascertain, what we consider to be, the maximum amount of hand/arm vibration that the operator can experience in the course of his/her work. Accordingly a trench was excavated and we used MOT Type 1 material, trying at all times to replicate site conditions exactly. The trench was 200mm deep and 3 metres long. The base course was made up of very tightly compacted material – so tight that a mechanical breaker was needed and used to loosen this material.

The results are below and are expressed in Metres per second, per second. Safe user time is based on the use during a normal 8 hour shift.

GP1400H - 8.19 - Safe user time being 1 hour 45 minutes.

GP1600H – 9.65 – Safe user time being 1 hour 15 minutes.

GP1600H (fitted with wheel kit) 8.03 – Safe user time being 2 hours 8 minutes.

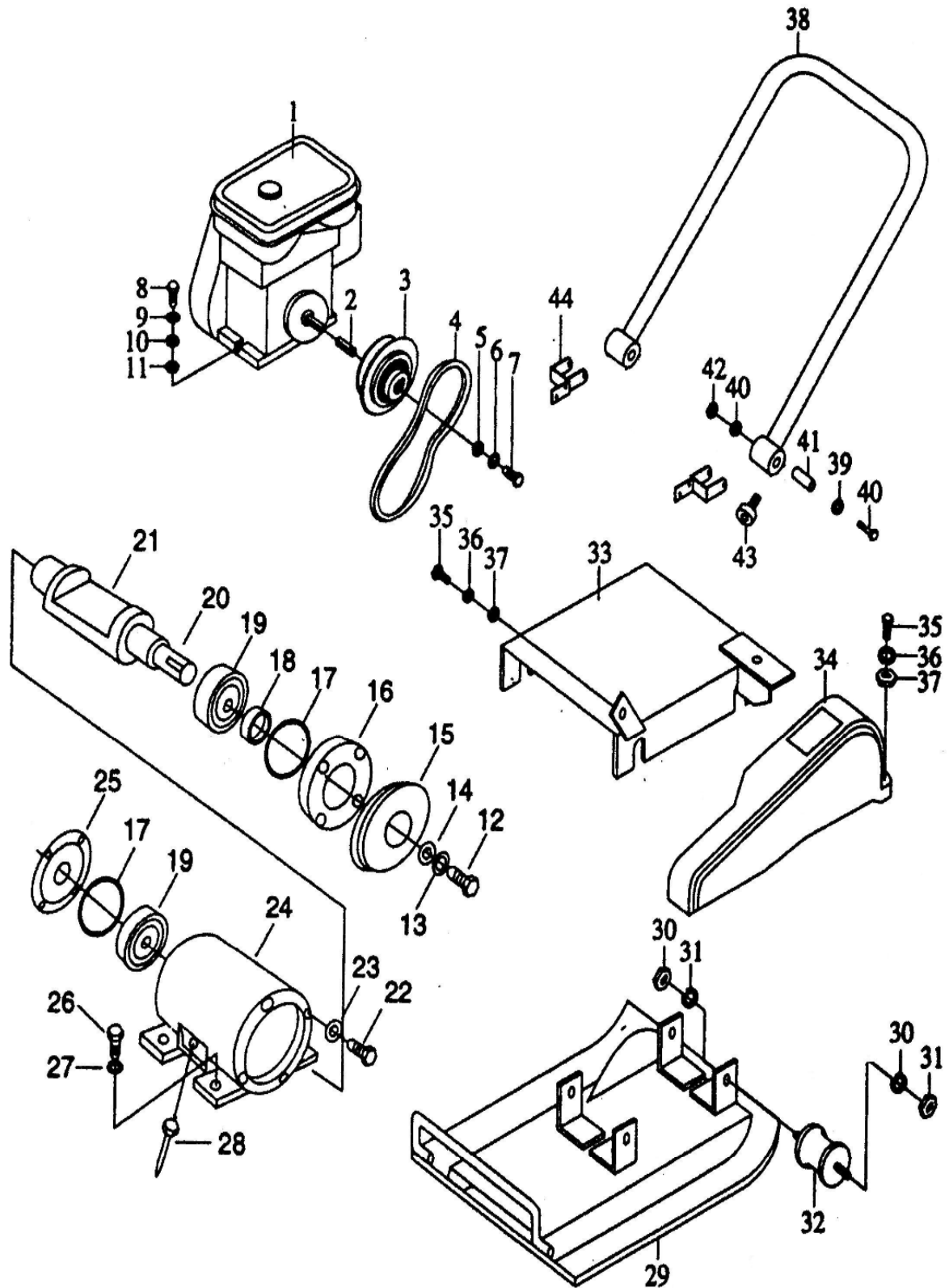
Full details of this **independent** test are available from MBW (UK) Ltd. It should also be noted that as there are no guidelines on testing protocol we could have manipulated our numbers down by testing the unit on wet sand, testing it whilst suspended in the air or indeed on a rubber test mat. When comparing our figures with other manufacturers we strongly suggest that consideration is given to their protocol in order that a “level playing field” is established.

We believe that our figures are reflective of true site conditions.

Greig Sandiford

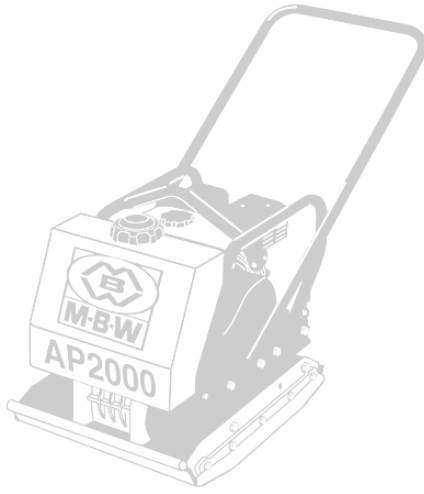
Greig Sandiford
Managing Director – European Operations.

GP1400 & GP1600 ASSEMBLIES

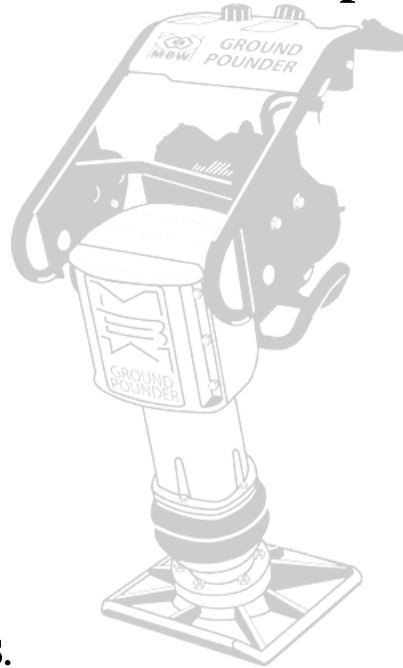


Parts List For MBW GP1400 & GP1600 Plate Compactors.

Item number.	Part number.	Product Description.	Quantity.
1	12860	Honda GX120QX Petrol	1
2	JO122	Key - Clutch	1
3	JO123	Centrifugal Clutch ¾"	1
4	01013	V-Belt A-30	1
5	JO125	Plain Washer	1
6	JO126	Spring Washer	1
7	JO127	Bolt	1
8	JO128	Bolt	4
9	JO129	Spring Washer	4
10	JO130	Washer	8
11	JO131	Nut	4
12	JO132	Pulley Securing Bolt	1
13	JO133	Spring Washer	1
14	JO134	Washer	1
15	JO135	Pulley	1
16	JO136	Housing Cover "A"	1
17	JO137	O-Ring	2
18	JO138	Oil Seal	1
19	JO139	Bearing	2
20	JO140	Key	1
21	JO141	Eccentric shaft (Vibrator)	1
22	JO142	Housing Cover Fitting Bolt	8
23	JO143	Spring Washer	8
24	JO144	Vibrator Housing	1
25	JO145	Housing Cover "B"	1
26	JO146	Bolt	4
27	JO147	Spring Washer	4
28	JO148	Oil Gauge	1
29	JO149	Base Plate GP1400	1
29B	JO149B	Base Plate GP1600	1
30	JO150	Lock Nut	8
31	JO151	Washer	8
32	JO152	Rubber Shock-Mount "A"	4
33	JO153	Engine Deck Assembly	1
34	17503	Belt Guard	1
35	JO155	Bolt	2
36	JO156	Spring Washer	2
37	JO157	Washer	2
38	JO158	Handle	1
39	JO159	Bolt	2
40	JO160	Washer	4
41	JO161	Rubber Shock-Mount "B"	2
42	JO162	Nut	2
43	JO163	Handle Mount Bracket	2



MBW Plate Compactors.



MBW Rammers.

www.mbw.com

Providing Solutions That Last.